




Vertex

Performance Fabrics for Vertical, Roller & Panel Blinds

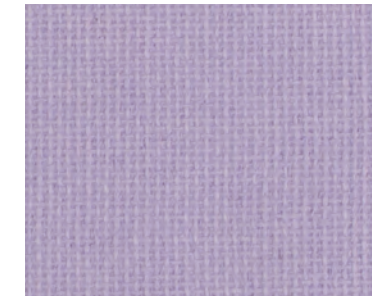
COLOUR RANGE	22
LOUVRE WIDTHS	127mm / 89mm
ROLLER WIDTH	2000mm / 2500mm  / 3000mm 
FABRIC COMPOSITION	100% Polyester
FABRIC WEIGHTS	220g/m ²
FLAMMABILITY STANDARDS	Conforms to BS5867, Part2: Type B2008 IMO 2010 FTP Code Annex 1 Part 7
COLOUR FASTNESS	Tested in accordance with BS EN ISO 150-B01 : 1999
CLEANING	Wipe with a damp cloth, do not tumble dry, do not iron
MOISTURE RESISTANCE	Suitable for moist conditions
ANTI BACTERIAL	Biosafe Accreditation
AVAILABILITY	Ex-stock
FABRIC SAMPLES	Available on request

 Also available in wider width fabric(s).

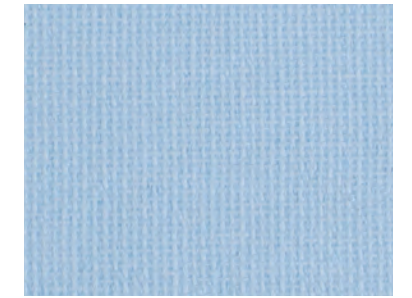
Cherry



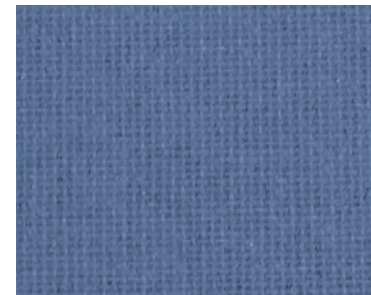
Heather



Surf



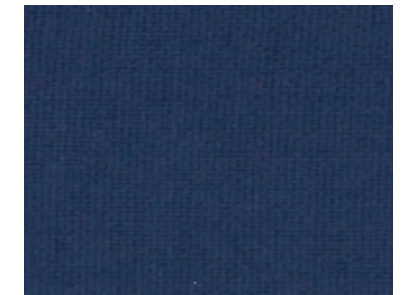
Marine



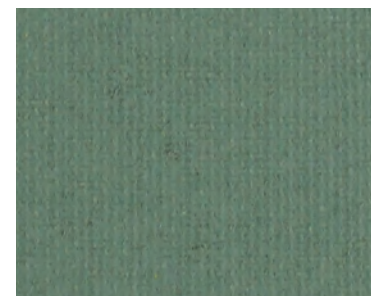
Cobalt



Dark Azure 



Lawn



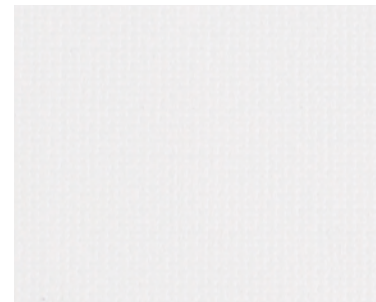
Apple



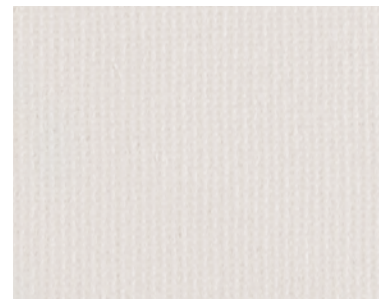
Mustard



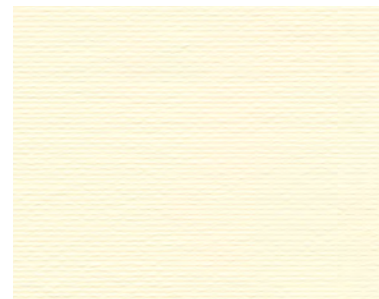
Frost 



Sesame 



Vanilla 



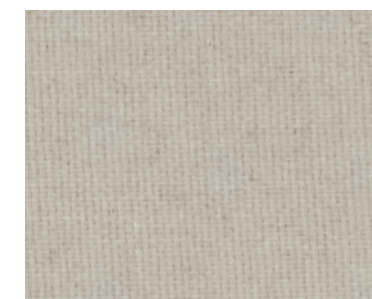
Warm Almond 



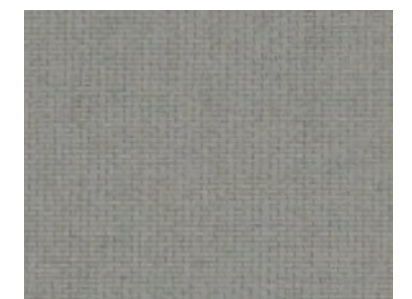
Mist 



Stone Grey 



Fossil Grey 



Tan



Sandstone



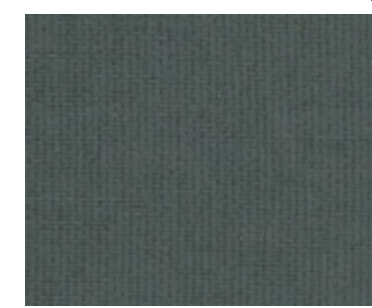
Linen



Graphite 



Steel 



Coal 



Colours reproduced here may vary from the actual colours due to the limitations of the printing process. Great care has been taken to ensure that the fabric swatches and the information supplied are correct, however specifiers and customers are advised to check the suitability of materials before use.

LARGER SAMPLES ARE AVAILABLE ON REQUEST.

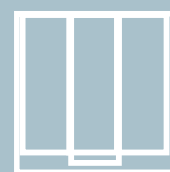
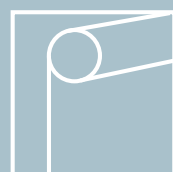


Vertex

Performance Fabrics for Roller, Vertical & Panel Blinds

ARCHITECTS SPECIFIERS CONTRACTORS

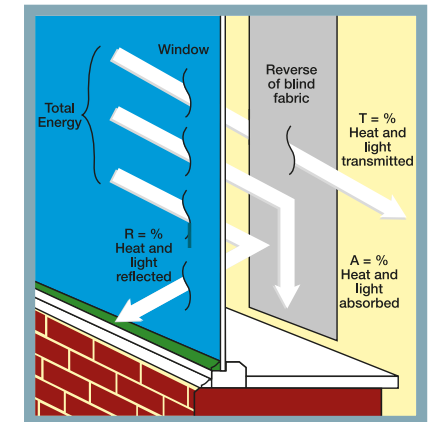
CJ/SfB 1976 reference by SfB Agency		
(76.7)	X	



SOLAR, OPTICAL AND COLOUR FASTNESS PROPERTIES

SHADING CO-EFFICIENT

The solar heat gain with the blind at the window divided by the solar heat gain with no blind at the window. The lower the shading co-efficient, therefore, the higher the efficiency of the fabric. The test results in the table below have been achieved using a single 6mm glass glazing system.



FIRE PROTECTION

Vertex meets FR standard BS 5867 Part 2 Type B. Further information is available on request.

VERTEX | SOLAR, OPTICAL PERFORMANCE CHART

COLOUR RANGE	OPTICAL TRANS %	SOLAR TRANS %	LIGHT ABSORPTION %	HEAT REFLECTANCE %	LIGHT REFLECTANCE %	ULTRAVIOLET PROTECTION %
TAN	1	9	34	56	42	100
FROST	12	14	9	78	84	100
SESAME	12	13	10	77	82	100
VANILLA	10	13	13	73	77	100
W. ALMOND	8	12	16	71	73	100
SANDSTONE	9	13	16	71	74	100
LINEN	7	12	18	70	71	100
CHERRY	<1	4	62	34	16	100
HEATHER	1	9	31	60	43	100
SURF	4	11	26	63	55	100
MARINE	<1	1	70	28	19	100
COLBALT	0	6	59	35	10	100
D. AZURE	0	0	89	11	7	100
LAWN	<1	<1	80	20	19	100
APPLE	1	4	54	42	42	100
MUSTARD	11	11	23	66	66	100
MIST	3	5	41	54	56	100
STONE	1	2	56	41	42	100
FOSSIL	10	<1	23	27	28	100
GRAPHITE	0	<1	82	18	19	100
STEEL	0	0	89	11	12	100
COAL	0	0	94	6	6	100



North West, West Midlands & Wales
 Pentel Contracts Limited • 2nd Floor, Lowry Mills, Lees Street, Swinton • Manchester • M27 6DB

t • 0161 872 7642

e • info@pentel-contracts.com www.pentel-contracts.com

Rest of UK
 Dearnleys Limited • Units 1-4, Sirdar Business Park, Flanshaw Lane • Wakefield • W. Yorkshire WF2 9HX

t • 01924 371 791

e • info@dearnleys.com www.dearnleys.com