

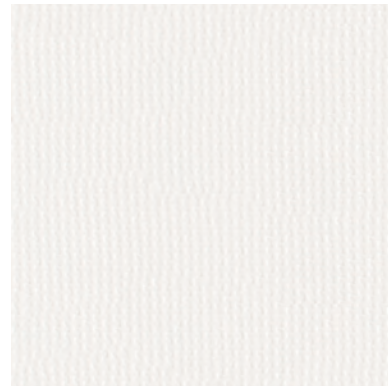


Obscura

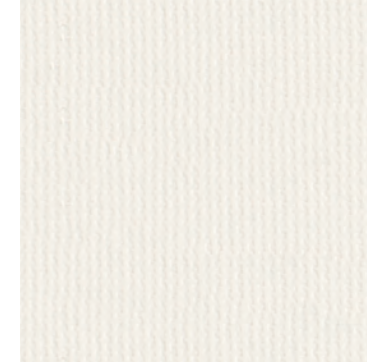
Performance Fabrics for Roller & Vertical Blinds

COLOUR RANGE	14
LOUVRE WIDTHS	127mm / 89mm
ROLLER WIDTH	1830mm / 2500mm  / 3000mm 
FABRIC COMPOSITION	4 ply; 75% PVC, 25% Fibreglass
FABRIC WEIGHTS	407g/m ² - 12oz/syd
FLAMMABILITY STANDARDS	Conforms to BS5867, Part2: Type B2008 IMO 2010 FTP Code
COLOUR FASTNESS	Tested in accordance with BS EN ISO 105-B01:1999
SHADING	Blackout. Suitable for computer environments
CLEANING	Wipe clean
MOISTURE RESISTANCE	Suitable for moist conditions
ANTI BACTERIAL	Incorporates Biosafe® Formula
AVAILABILITY	Ex-stock
FABRIC SAMPLES	Available on request

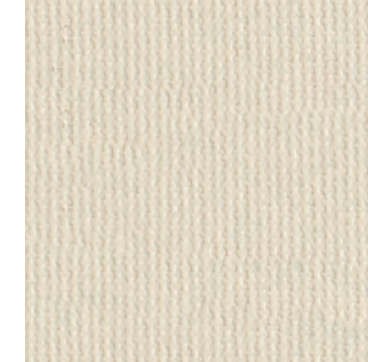
White



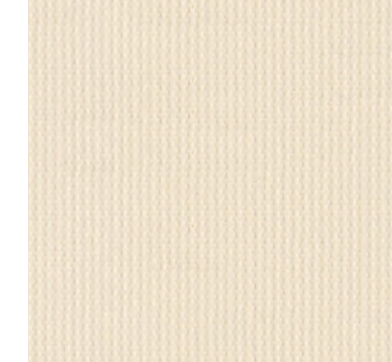
Vanilla



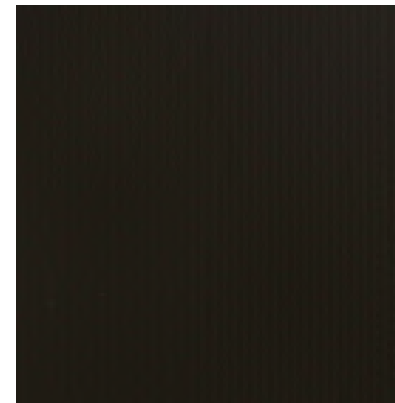
Beige



Magnolia



Black / White



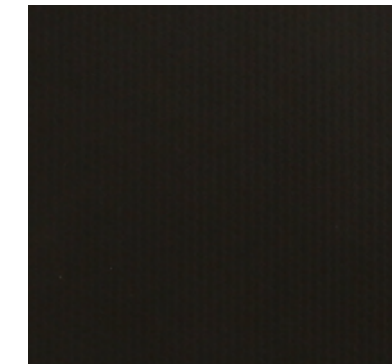
Grey



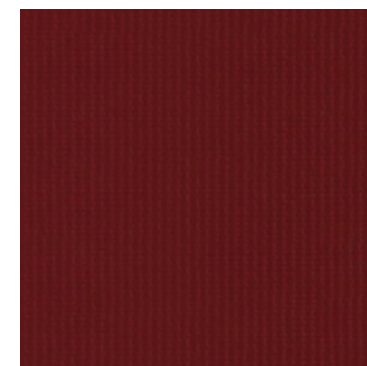
Iron



Black



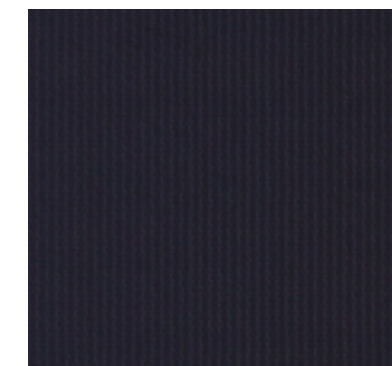
Burgundy



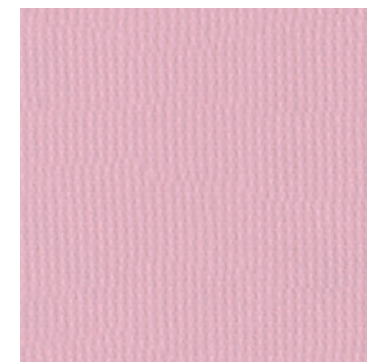
Dark Green



Navy



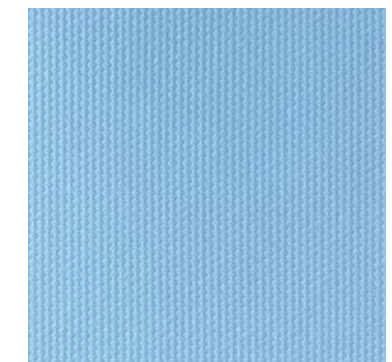
Pink





Mint Green









Sky Blue



 Also available in white backed fabric.

 Also available in wider width fabric(s).

AT A GLANCE

-  roller blind
-  vertical blind
-  flame retardant
-  black out
-  suitable for moist environments
-  wipe clean



Colours reproduced here may vary from the actual colours due to the limitations of the printing process. Great care has been taken to ensure that the fabric swatches and the information supplied are correct, however specifiers and customers are advised to check the suitability of materials before use.

LARGER SAMPLES ARE AVAILABLE ON REQUEST.



Obscura

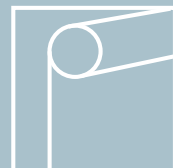
Performance Fabrics for Roller & Vertical Blinds

ARCHITECTS

SPECIFIERS

CONTRACTORS

CJ/SFB 1976 reference by SFB Agency		
(76.7)	X	



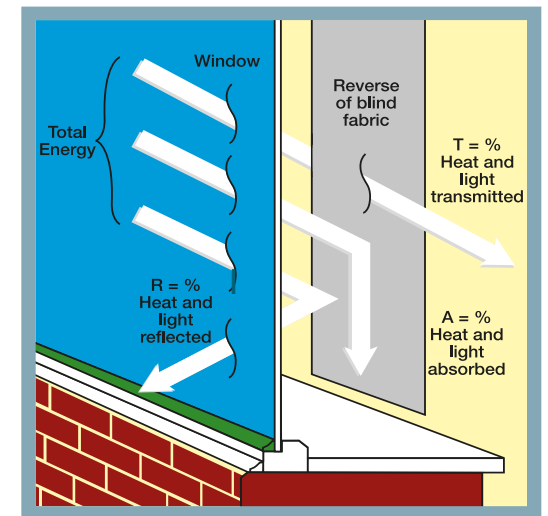
SOLAR, OPTICAL AND COLOUR FASTNESS PROPERTIES

SHADING CO-EFFICIENT

The solar heat gain with the blind at the window divided by the solar heat gain with no blind at the window. The lower the shading co-efficient, therefore, the higher the efficiency of the fabric. The test results in the table below have been achieved using a single 6mm glass glazing system.

FIRE PROTECTION

Obscura meets FR standard BS 5867 Part 2 Type B. Further information is available on request.



OBSCURA | SOLAR, OPTICAL PERFORMANCE CHART

COLOUR RANGE	OPTICAL & SOLAR TRANS %	SOLAR REFLECTION %	HEAT & LIGHT ABSORPTION %	SUN BLOCK %	ULTRAVIOLET PROTECTION %
BLACK WHITE	0	73	27	100	100
BOTTLE GREEN	0	8	92	100	100
BURGUNDY	0	17	83	100	100
NAVY	0	9	91	100	100
BLACK	0	5	95	100	100
IRON	0	29	71	100	100
SEA BLUE	0	64	36	100	100
GREY	0	51	49	100	100
MINT GREEN	0	66	34	100	100
PINK	0	66	34	100	100
WHITE	0	73	27	100	100
MAGNOLIA	0	65	35	100	100
BEIGE	0	63	37	100	100
VANILLA	0	69	30	100	100



North West, West Midlands & Wales
 Pentel Contracts Limited • 2nd Floor, Lowry Mills, Lees Street, Swinton • Manchester • M27 6DB
 t • 0161 872 7642

e • info@pentel-contracts.com www.pentel-contracts.com

Rest of UK
 Dearnleys Limited • Units 1 - 4, Sirdar Business Park, Flanshaw Lane • Wakefield • W. Yorkshire WF2 9HX
 t • 01924 371 791

e • info@dearnleys.com www.dearnleys.com